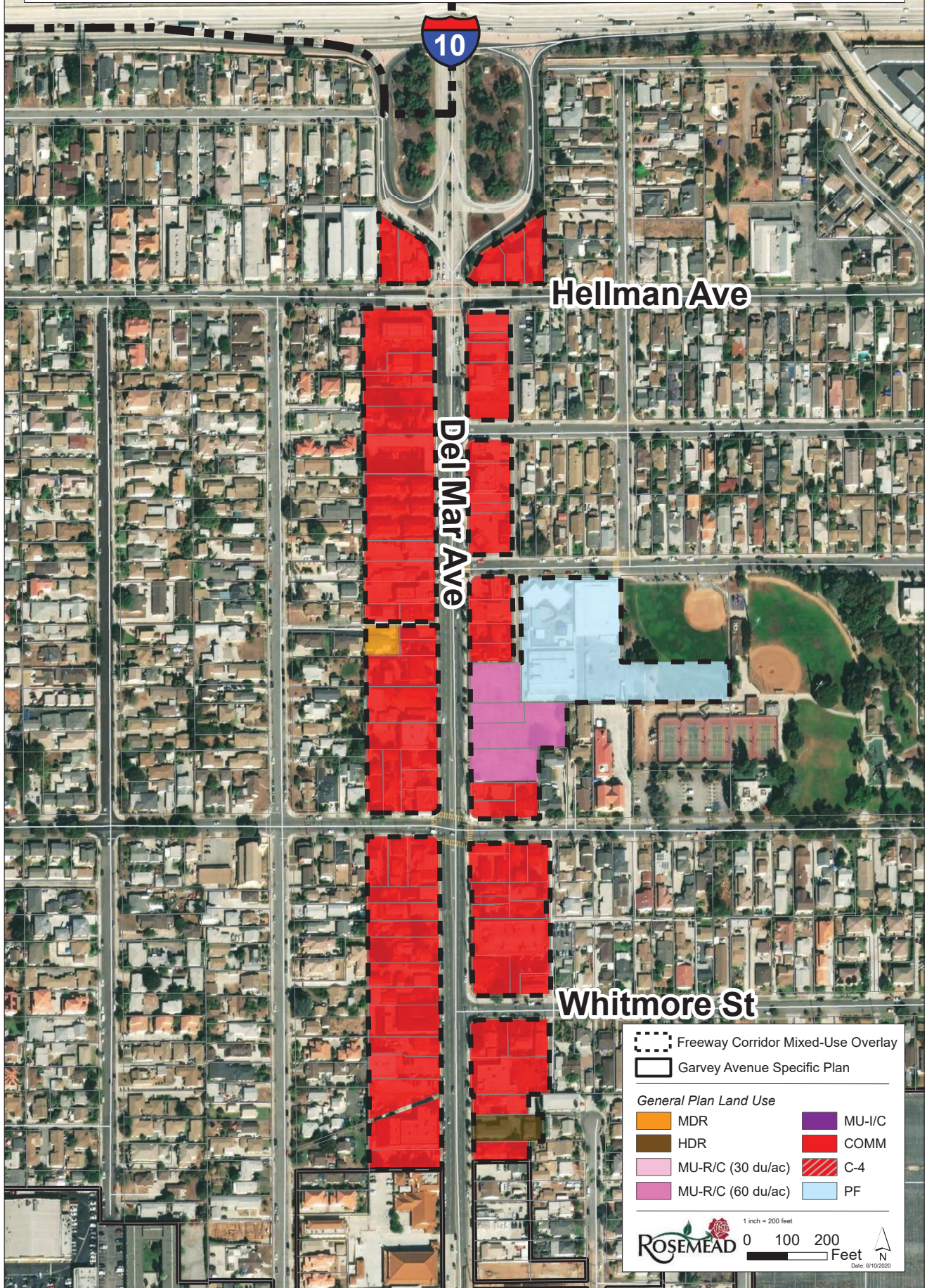


# Rosemead Freeway Corridor Mixed-Use Overlay Area One



Hellman Ave

Del Mar Ave

Whitmore St

- Freeway Corridor Mixed-Use Overlay
  - Garvey Avenue Specific Plan
- General Plan Land Use**
- |                   |        |
|-------------------|--------|
| MDR               | MU-I/C |
| HDR               | COMM   |
| MU-R/C (30 du/ac) | C-4    |
| MU-R/C (60 du/ac) | PF     |

1 inch = 200 feet

ROSEMEAD 0 100 200 Feet

N

Date: 01/10/2020

# Rosemead Freeway Corridor Mixed-Use Overlay Area Two



10

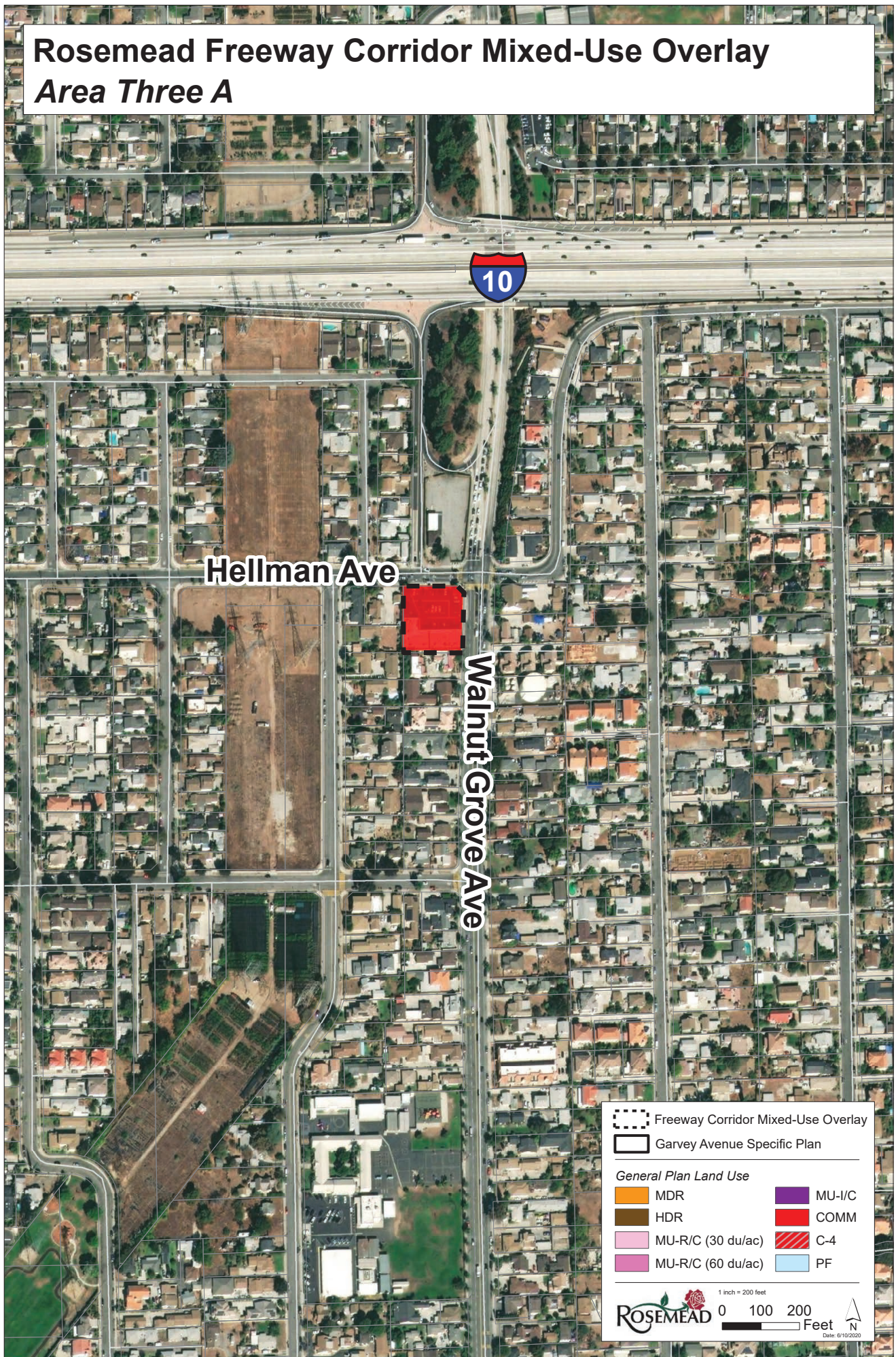
Hellman Ave

San Gabriel Blvd

Emerson Pl

- Freeway Corridor Mixed-Use Overlay
  - Garvey Avenue Specific Plan
- General Plan Land Use*
- |                   |        |
|-------------------|--------|
| MDR               | MU-I/C |
| HDR               | COMM   |
| MU-R/C (30 du/ac) | C-4    |
| MU-R/C (60 du/ac) | PF     |

# Rosemead Freeway Corridor Mixed-Use Overlay Area Three A



Hellman Ave

Walnut Grove Ave

- Freeway Corridor Mixed-Use Overlay
  - Garvey Avenue Specific Plan
- General Plan Land Use
- |                   |        |
|-------------------|--------|
| MDR               | MU-I/C |
| HDR               | COMM   |
| MU-R/C (30 du/ac) | C-4    |
| MU-R/C (60 du/ac) | PF     |

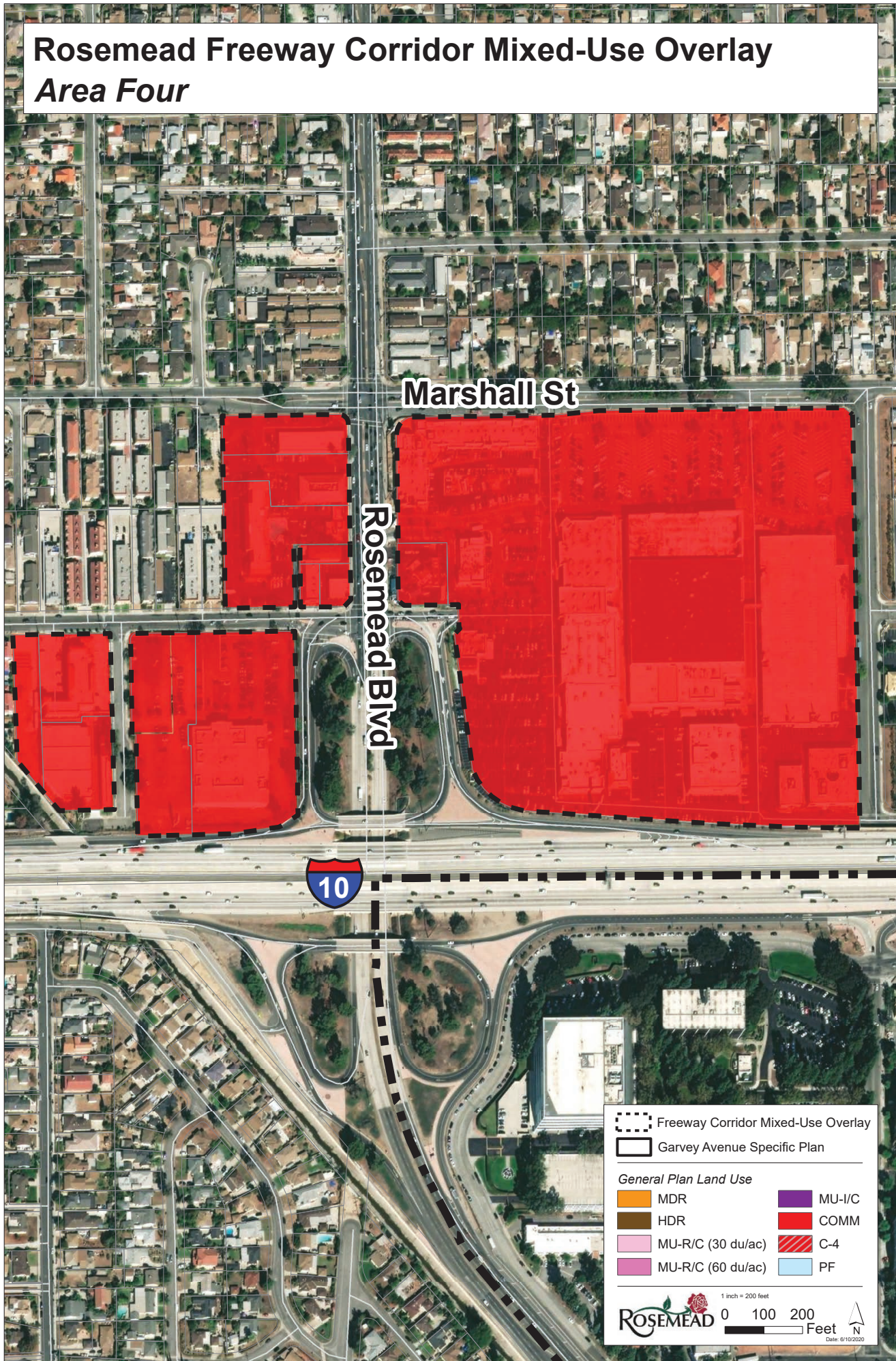
1 inch = 200 feet

ROSEMEAD Feet N  
Date: 01/10/2020

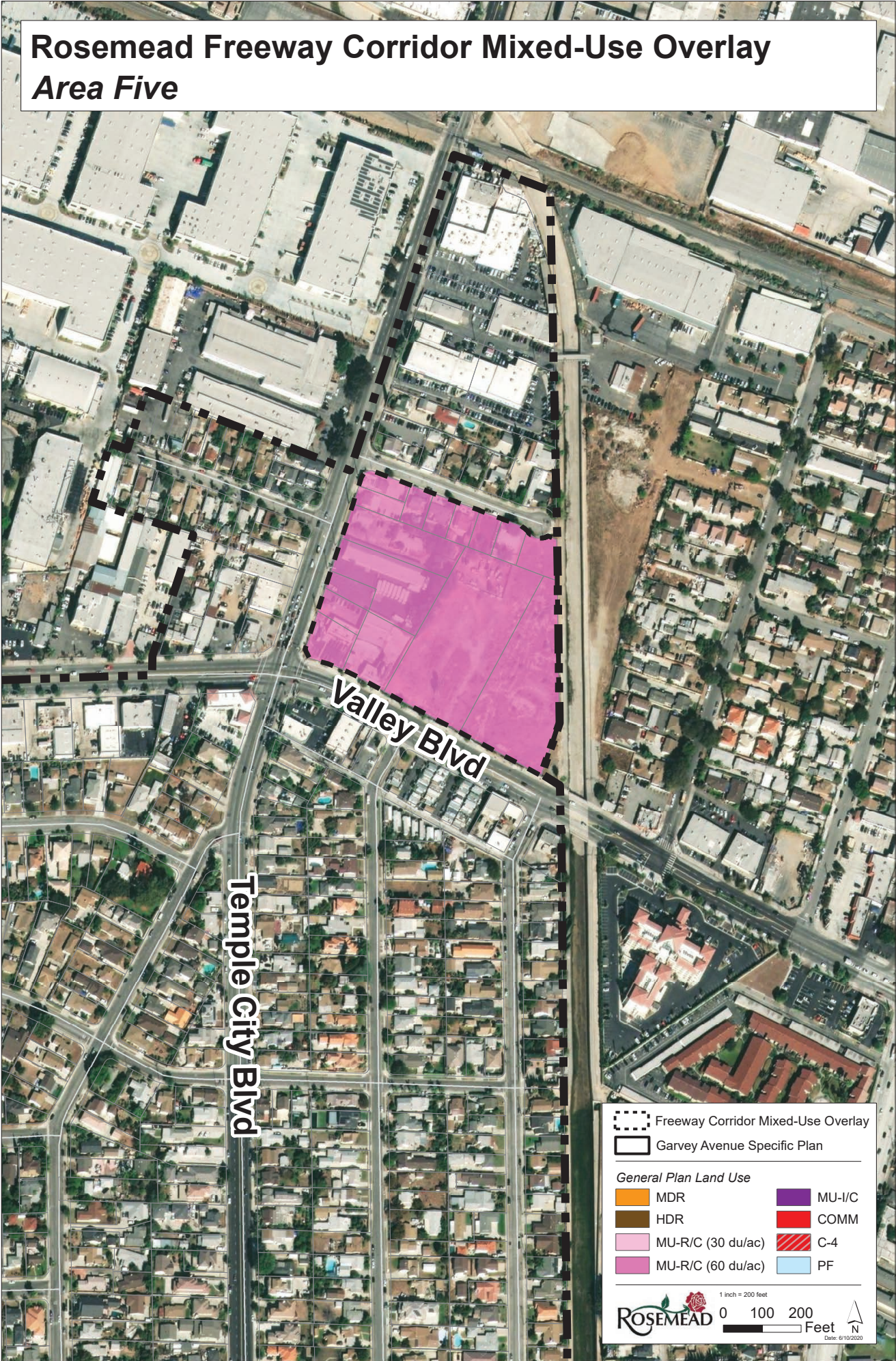
# Rosemead Freeway Corridor Mixed-Use Overlay Area Three B



# Rosemead Freeway Corridor Mixed-Use Overlay Area Four



# Rosemead Freeway Corridor Mixed-Use Overlay Area Five



Valley Blvd

Temple City Blvd

- Freeway Corridor Mixed-Use Overlay
  - Garvey Avenue Specific Plan
- General Plan Land Use
- |                   |        |
|-------------------|--------|
| MDR               | MU-I/C |
| HDR               | COMM   |
| MU-R/C (30 du/ac) | C-4    |
| MU-R/C (60 du/ac) | PF     |